

ACE INTERVENTION: REDUCING HIV STIGMA AND PROMOTING COMMUNITY RESILIENCE THROUGH CAPACITY BUILDING – LESSONS FROM THE GROUND

CANAC 35th Annual
Conference

May 23-25, 2024

Ottawa, Canada

Presenter: Aniela M. dela Cruz
for the ACE Study Team

Authors: Aniela M. dela Cruz,
Sipiwe Mapfumo, Folasade
Olaniyan, Pragya Mishra, Carla
Hilario, Saaka Sulemana,
Christa Sato, Sara Escarraga,
Salima Meherali, Josephine Pui-
Hing Wong



ACCEPTANCE &
COMMITMENT to
EMPOWERMENT

ACKNOWLEDGEMENTS

ACE STUDY TEAM & PARTNERS

J.P Wong

A. Li

A. dela Cruz

B. Hissein-Habre

B. Salami

C. Cheung

C. Hilario

C. Sato

D. Miller

F. Olaniyan

I. Luginaah

J. Etowa

K. Fung

K. Wong

M. Narushima

M. Nleya-Ncube

M. Owino

M. Poon

M. Vahabi

Y. Chen

S. Escarraga

S. Mapfumo

S. Meherali

S. Suleman

X. Ning

Y. Zhang

Y. Yuan Chen

Alberta Community Council on HIV

SafeLink Alberta (Formally HIV Community Link)

HIV Edmonton

AIDS Committee of Durham

Regional HIV/AIDS Connection
Positive Living Niagara

AIDS Committee of Ottawa

Community Alliance for Accessible Treatment

All our project participants including community agencies, and community members who have shared their expertise and experiences



**LAND
ACKNOWLEDGEMENT**

The background features a large white circle on the left and a large pink circle on the right, both overlapping a dark blue background. The pink circle contains several thin, white, concentric circular lines.

**WHO IS IN THE
SESSION TODAY?**

OUTLINE

Background

Overview of ACE intervention study activities to date, including the application of the RE-AIM (reach, effectiveness, adoption, implementation and maintenance) framework

Discuss the social, environmental, and contextual facilitators and challenges of engaging communities

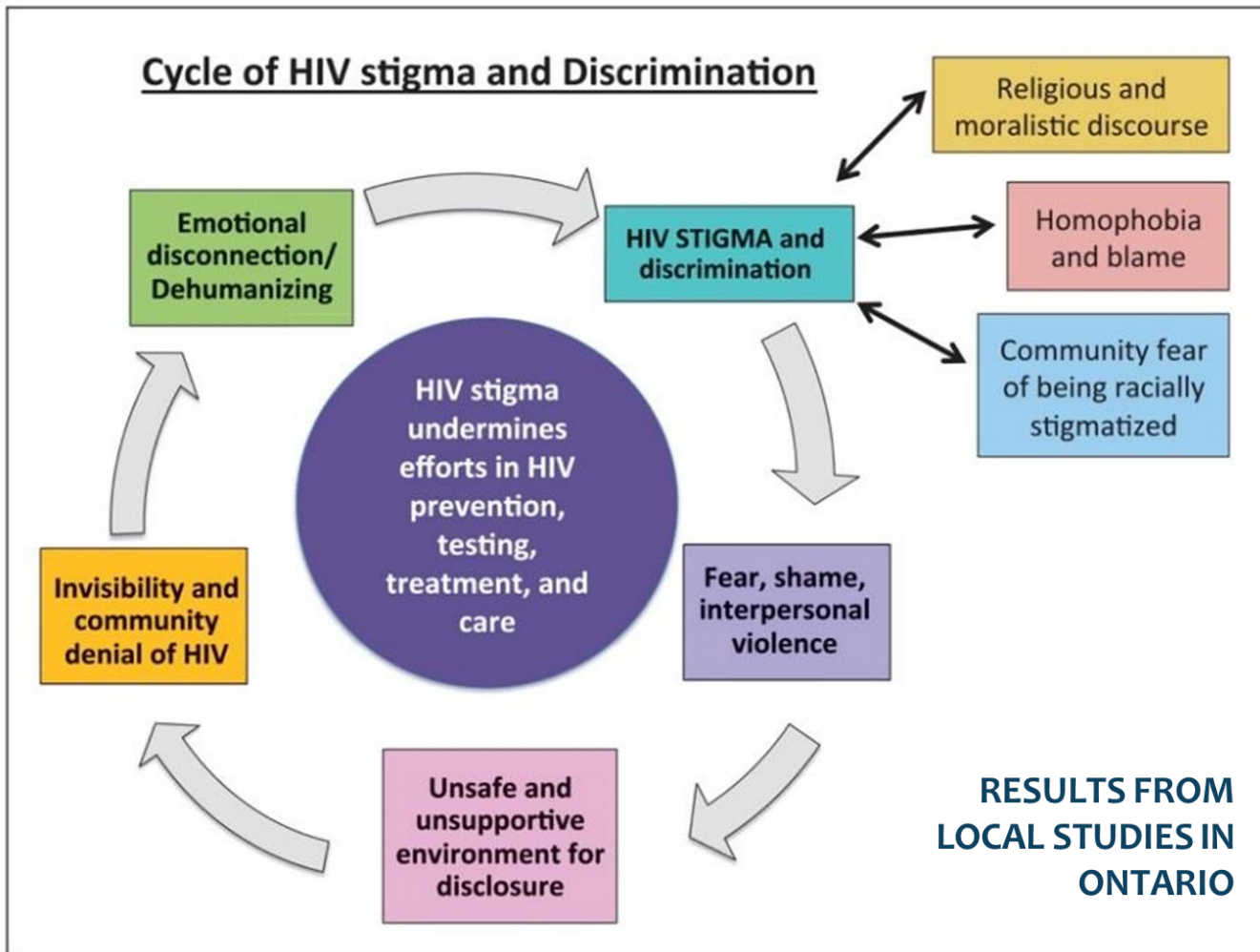
Engage participants in dialogue about strategies to mobilize community engagement in HIV intervention studies

Discussion/Questions

BACKGROUND

- Close to 1 out of 5 people in Canada are immigrants
- About 7 out of 10 immigrants belong to a racialized group
- racialized immigrants bear a high burden of HIV
- in 2019, 42.7% of reported cases of HIV (with a known race/ethnicity) were members of a racialized population.
- HIV vulnerability of racialized immigrant groups are related to:
 - displacement and settlement stress
 - access barriers
 - intersecting marginalization (racism, sexism, homophobia, transphobia, poverty, etc.)
 - HIV stigma and discrimination

Cycle of HIV stigma and Discrimination



ACCEPTANCE AND COMMITMENT TO EMPOWERMENT (ACE) INTERVENTION STUDY

Overall goal:

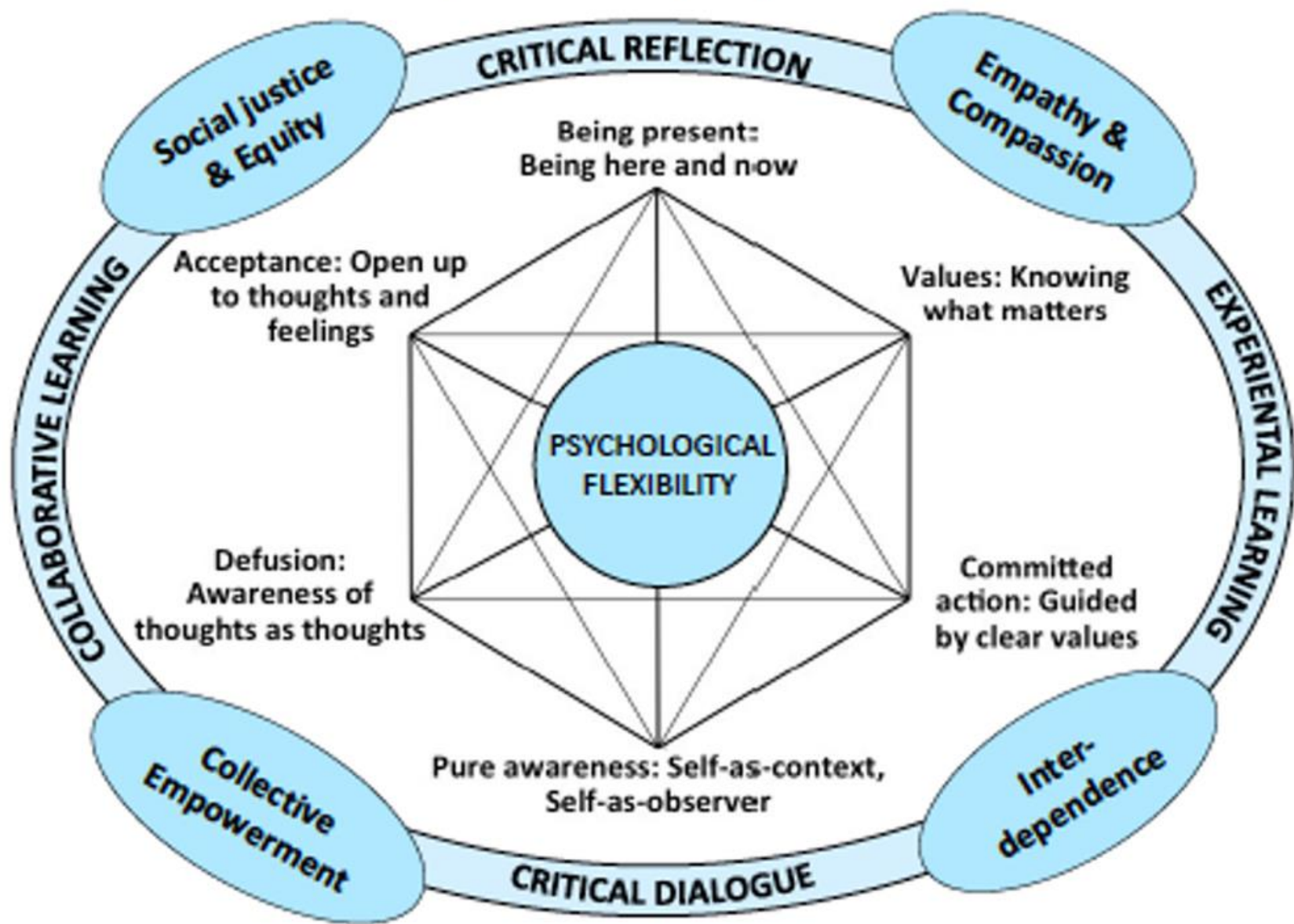
To reduce HIV stigma and promote collective resilience

Objectives:

To implement the **Acceptance and Commitment to Empowerment (ACE)** intervention, found to be effective, in Alberta (Calgary, Edmonton) and Ontario (London, Durham, Ottawa , GTA)

To determine how accessible, effective, and sustainable is ACE in address HIV stigma and promoting HIV champions and collective resilience.

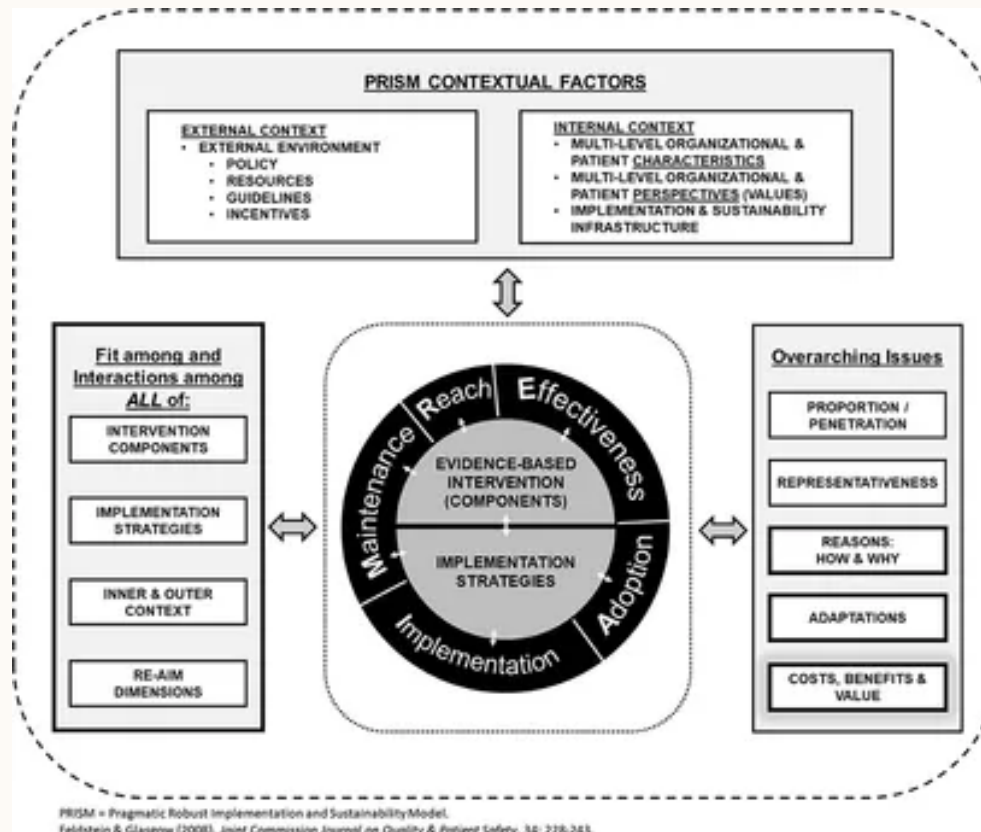
Acceptance and Commitment to Empowerment (ACE) Model



RE-AIM FRAMEWORK

(Glasgow et al., 2019)

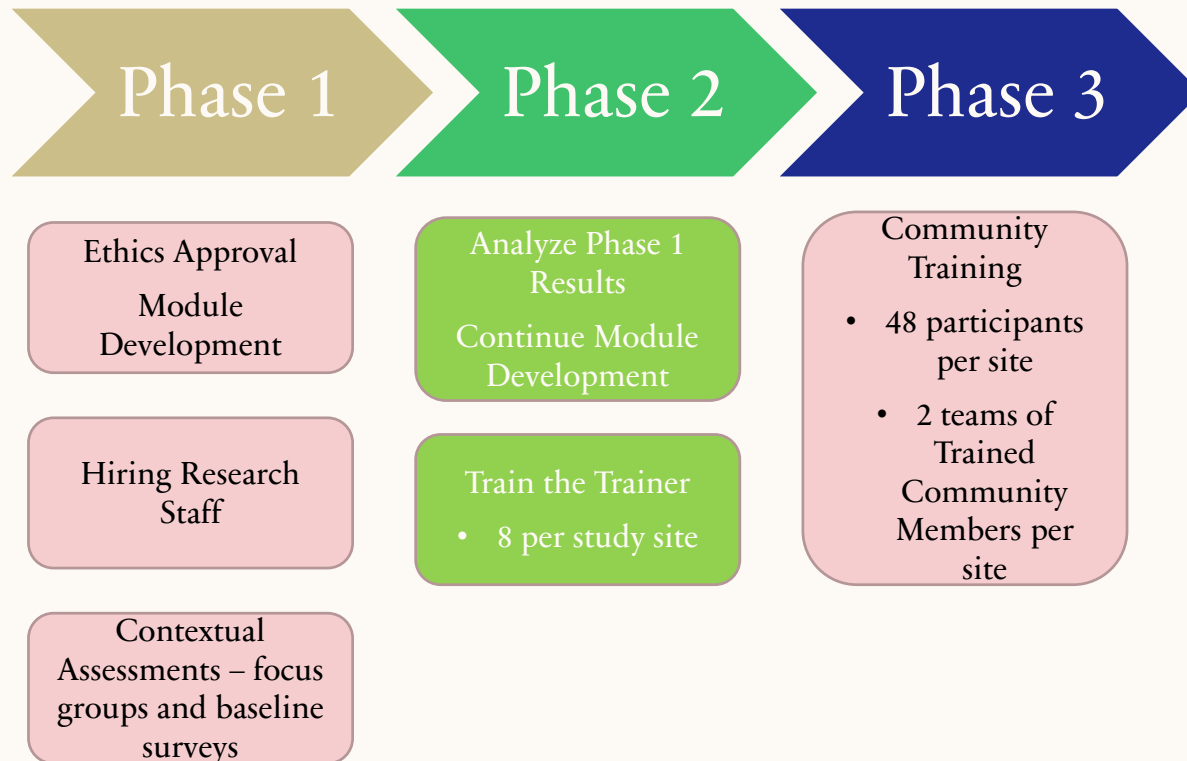
THE RE-AIM FRAMEWORK (GLASGOW ET AL., 2019)





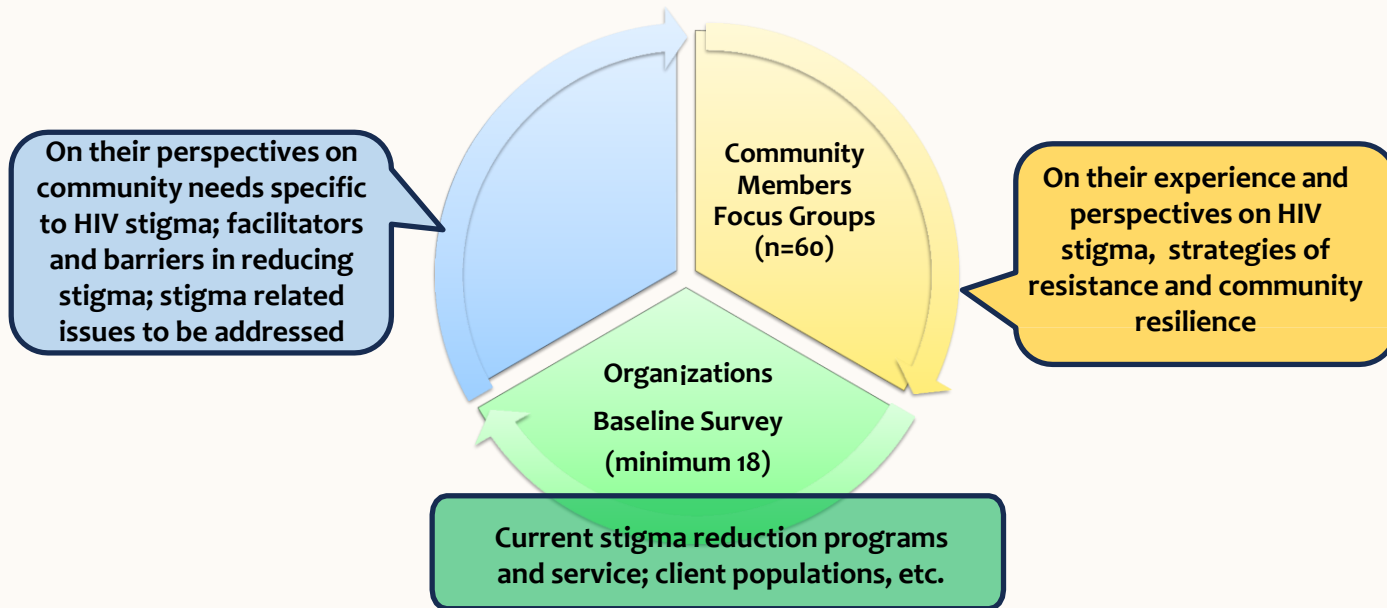
**SUMMARY OF
ACTIVITIES TO DATE**

THREE-PHASE STUDY



1

PHASE ONE: CONTEXTUAL ASSESSMENT



Results are used to inform the refinement of the ACE intervention.

2

PHASE TWO: TRAIN-THE-TRAINER

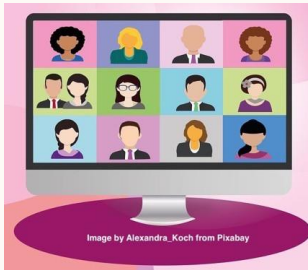
ACE intervention consists of:

- one pre-intervention self-learning module on HIV101
- 6 weekly self-directed online modules (about 1 hour each) plus a 1.5-hour weekly interactive video group session.
- 4 online Trainer-the-Trainer workshops on the ACE model and group facilitation

One-hour online
self-directed
learning model



Weekly 1.5-hour
Online
Group Session



Goal: To increase participants' psychological flexibility, resilience, and increase their leadership capacity in addressing HIV stigma

Participants:

- ✓ Age 18 and over; service providers/ community leaders, living in one of the six cities; interested in reducing HIV stigma, committed to becoming ACE facilitators

Recruitment: at least 8 participants in each of the six cities

3

PHASE THREE: COMMUNITY CHAMPIONS

ACE intervention consists of:

- one pre-intervention self-learning module on HIV101
- 6 weekly self-directed online modules (about 1 hour each) plus a 1.5-hour weekly interactive video group session.

One-hour
online self-
directed
learning model



Weekly 1.5-hour
Online
Group Session



Goal: To increase participants' psychological flexibility, resilience, and readiness to collaboratively reduce stigma.

Participants:

- ✓ Age 18 and over; diverse community members, living in one of the six cities; interested in reducing HIV stigma



Recruitment: Each site has 2 teams of ACE facilitators. Each team recruits and trains 24 community members (6 sites x 2 teams x 24 persons; **n= 288 champions**)

The background features a large white circle on the left and a large pink circle on the right, both overlapping a dark blue background. The pink circle contains several thin, white, concentric circular lines.

LESSONS FROM THE GROUND

Calgary and Edmonton (Alberta) Sites

ALBERTA LANDSCAPE

- **Changes over the years**
 - Evolution of the ACHF
 - Evolution of the Federal Initiative to Address HIV/AIDS (FI)
 - Evolution of HIV/AIDS Strategic Initiatives
 - STBBI/HIV/AIDS/Hep C Strategic Initiatives
 - Government of Canada's sexually transmitted and blood-borne infections (STBBI) action plan 2024-2030
 - AIDS Service Organizations (ASO)
 - Epidemiological Data
 - Covid-19 Pandemic
- Community-based work since 1998 – launch of the AIDS Community Action Program (ACAP) across Canada
- In Alberta: Tri-partite Partnership – Alberta Community HIV Fund (ACHF)
- Funding program implemented collaboratively with the government of Canada, government of Alberta, and the Alberta Community Council on HIV (ACCH)
- ACHF Provincial Consortium

IMPLEMENTING ACE IN ALBERTA

Strengths
and Successes

Challenges

Overcoming
Challenges

The background features a large white circle on the left and a large pink circle on the right, both overlapping a dark blue background. The pink circle contains several thin, white, concentric curved lines that resemble a fingerprint or a stylized wave pattern.

BARRIERS AND FACILITATORS

Community Engagement and
Mobilization in
HIV Psychosocial Intervention Work

ANY QUESTIONS?

THANK YOU